

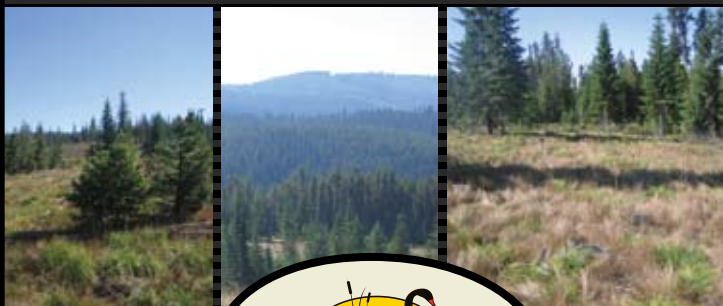
**TODD YOCUM**

OFFICE/MOBILE: 208.983.0450/208.507.1250  
 EMAIL: TODD@SOLBERGAGENCY.COM  
 WEBSITE: WWW.SOLBERGAGENCY.COM

**ELK CITY VIEW PROPERTIES, PRICES STARTING AT \$59,000**  
**LOT SIZE RANGE 4-20± ACRES**

**HIGHLIGHTS**

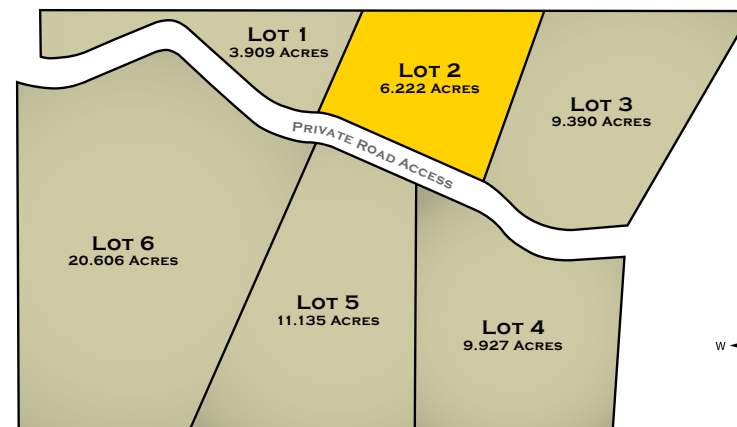
- HEART OF THE NEZ PERCE NATIONAL FOREST
- CONVENIENT ACCESS TO HWY 14
- MAGNIFICENT HUNTING
- TRAIL ENTRANCE NEXT TO PROPERTY
- AVISTA/ELECTRICITY TO ALL LOTS



**6 LOTS WITH VIEWS OF BUFFALO HUMP**

Near Elk City Idaho near the heart of the Nez Perce National Forest. Approximately one hour east of Grangeville in the heart of the Buffalo Hump Wilderness Area.

- ACCESS TO AVISTA POWER FROM EACH LOT
- HUNTING, SNOWMOBILING, FISHING, WILDLIFE VIEWING/PHOTOGRAPHY AND HIKING.



■ SOLD ■ PENDING ■ AVAILABLE

\* ARTIST RENDERING. FOR REFERENCE ONLY.



EXCLUSIVE PROPERTIES IN CENTRAL IDAHO